



# *Silentflōr*

*Design Led Acoustic Sheet Flooring*



### Design Led Acoustic Sheet Flooring

Acoustics are essential in the functionality of a building as they support the intended use of each space, managing how sound behaves within and between rooms.

Flooring plays a significant role in overall acoustic performance, and Polyflor's Silentflor 19dB heterogeneous flooring is specifically engineered to greatly reduce impact sound transmission, promoting quieter and more tranquil environments.

By absorbing and dampening noise at its source, Silentflor 19dB enhances acoustic quality, contributing to a more comfortable, peaceful, and productive indoor atmosphere.



Heterogeneous Vinyl Sheet



Acoustic Backing for sound reduction and comfort



**100% RECYCLABLE**  
CONTAINS RECYCLED MATERIAL



# SOUND SOUND SOUND SOUND SOUND REDUCTION





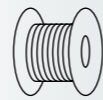
UK manufactured



2 x 20m sheet flooring



**34 designs**  
parquet, wood, concrete,  
terrazzo, infinity and cosmos



**34 weld rods**  
colour matched



**0.7mm wear layer**  
designed for  
commercial interiors



**Specific EPD**  
Independently verified



**Low VOC's**  
Indoor Air Comfort Gold

**PUR**

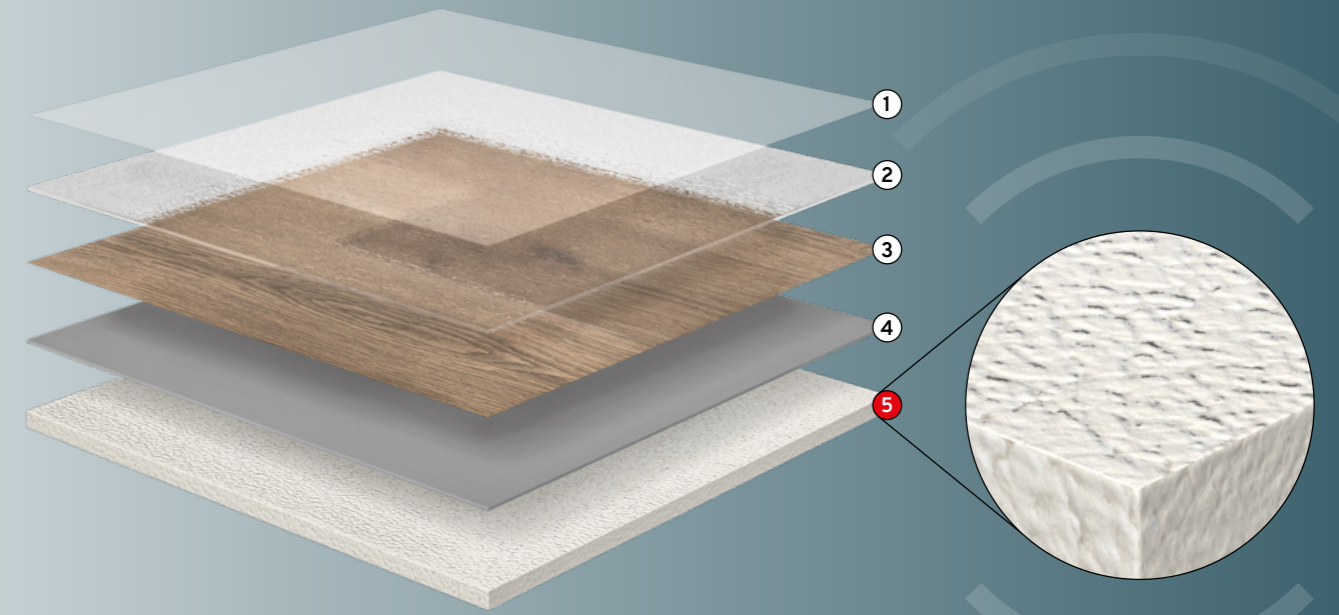
**Easy clean**  
lifetime polish free

# Silentflor

## A SOUND CHOICE



Combining contemporary and decorative design, Silentflor, Polyflor's acoustic heterogeneous sheet flooring offers a plethora of choice, developed to transform and enhance commercial environments. Silentflor is an ideal flooring solution for sectors including education, healthcare, retail and leisure, elevating heavy use areas out of the ordinary. Beyond its aesthetics, Silentflor provides superior acoustic performance, reducing impact sound by up to 19dB, delivering creative yet peaceful spaces.



### 1 PUR Finish

Silentflor incorporates a polyurethane reinforcement (PUR) surface finish which protects and shields the product. Combined with the superior closed surface finish, this enhanced protection allows the use of a polish-free maintenance regime.

### 2 Wear Layer

The 0.7mm commercial grade transparent wear layer is extremely dense, hard wearing and its key function is to protect the printed decorative layer. This layer also allows the surface embossing to create highly authentic wood grain, pitted stone or smooth effects.

### 3 Decoration Layer

The decoration layer is responsible for the floor's aesthetic appearance and makes heterogeneous flooring a versatile choice for varying interior design schemes. The innovative printing technique enables a wide range of design options and styles, from natural wood effect to contemporary stone or unique abstract designs.

### 4 Stabilisation Layer

This integral layer improves the product's dimensional stability and minimizes the effect of surrounding physical properties, for example fluctuating temperature and humidity. The stabilisation layer ensures the floor covering remains flat and stable for the product's life cycle.

### 5 Acoustic Backing Layer

The acoustic backing layer provides warmth and cushioning underfoot and achieves an impact sound reduction of at least 19dB. Moreover, this layer enables the floor covering to remain stable, durable and capable of handling heavy loads and impact without compromising performance.



# Parquet

Silentflor 19dB now showcases the beauty of parquet flooring, offering 3 choices in a practical and versatile flooring solution. Combining realistic wood grain with rich natural tones, the newly developed parquet designs help to create elegant aesthetics, ideal for a wide range of interiors.

**Pattern Size in Sheet:**

88 x 700mm



Size: 2 x 20m  
Coverage: 40m<sup>2</sup>



**8955 Edén Oak Parquet** w/r 9677



**8956 Serene Oak Parquet** w/r 9678



**8957 Upland Oak Parquet** w/r 9679

# Parquet





8952 Ridge Oak

# Wood

Skillfully portraying natural beauty and intricacy of timber planks, the Silentflor 19dB wood range replicates a variety of stunning oak wood species spanning a wide palette from light to dark, ensuring a perfect solution for any design scheme.

## Pattern Size in Sheet:

200 x 1500mm



Size: 2 x 20m  
Coverage: 40m<sup>2</sup>



9963 Smoked Oak

w/r 9827



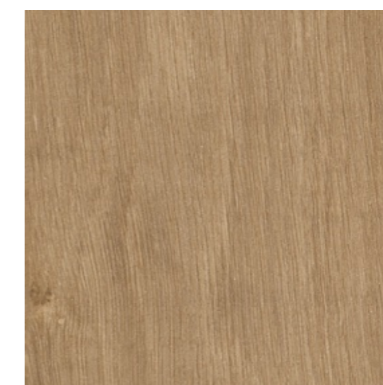
8952 Ridge Oak

w/r 9672



9952 Sun Bleached Oak

w/r 9825



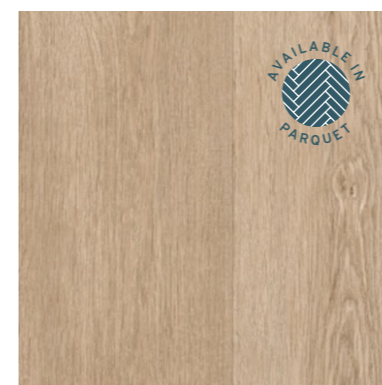
9957 English Oak

w/r 9823



9951 Silver Oak

w/r 9826



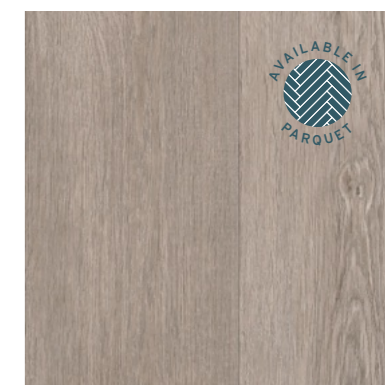
8951 Eden Oak

w/r 9671



8953 Serene Oak

w/r 9673



8954 Upland Oak

w/r 9675



Elevate commercial spaces and unlock endless creative possibilities by mixing and matching Silentflor 19dB acoustic flooring. The versatile range of timber, textures, and patterns are expertly developed to be beautiful stand-alone floors, or equally combined to create bold and striking design floors.









Size: 2 x 20m  
Coverage: 40m<sup>2</sup>

# Wood

For even more choice, the Silentflor 19dB collection also features elegant Limed Ash effects in varying colourways, offering muted tones and a distinctive whitewashed finish. Combined with softer, more subtle linear wood grain, these designs are perfect for creating bright, sophisticated and airy spaces.

## Pattern Size in Sheet:

166 x 1500mm

167 x 1500mm \*



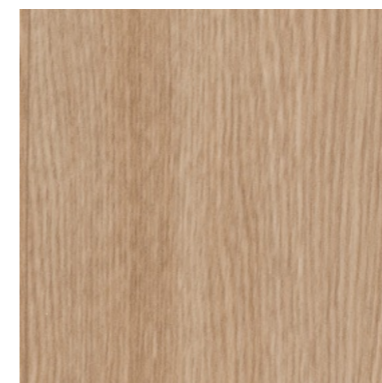
9955 Classic Limed Ash w/r 9833



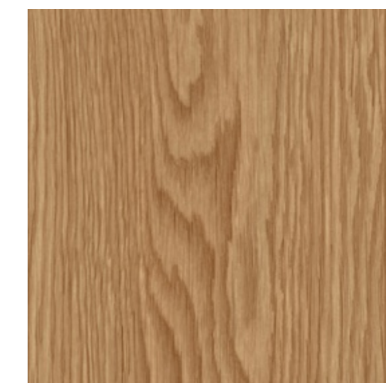
9953 Warm Limed Ash w/r 9832



9954 Roasted Limed Ash w/r 9831



9956 Blond Oak \* w/r 9820



9959 Honey Oak \* w/r 9821



9960 Toasted Oak \* w/r 9822





## Zone & define

Visually defining areas through zoning can help to create functional and inviting learning environments. Combining colours and patterns is an effective way to define and organise functional areas such as classrooms, common areas and play zones without the need for physical barriers.





# Concrete

Concrete effect vinyl flooring provides a sleek, modern aesthetic that combines the industrial appeal of raw concrete with the practicality and comfort of vinyl. Silentflor 19dB offers a wide choice of designs ranging from smooth, subtle textures to pitted, weathered effects, all of which complement a variety of commercial interior styles.



Size: 2 x 20m  
Coverage: 40m<sup>2</sup>



9971 Copper Ornamental

w/r 9861



9965 Light Grey Concrete

w/r 9858



8960 Sepia Cement

w/r 9688



8958 Dove Cement

w/r 9685



9966 Cool Concrete

w/r 9856



9967 Warm Concrete

w/r 9855



9970 Dark Industrial Concrete

w/r 9859



9968 Dark Grey Concrete

w/r 9857



8959 Pewter Cement

w/r 9686



9969 Light Industrial Concrete

w/r 9860





# Quiet Spaces

Quiet spaces are essential in busy environments such as offices and educational buildings, offering employees and students a place to study, focus and recharge without distraction. Silentflor 19dB significantly reduces impact sound, helping to control noise levels in commercial locations.



Concrete



Concrete



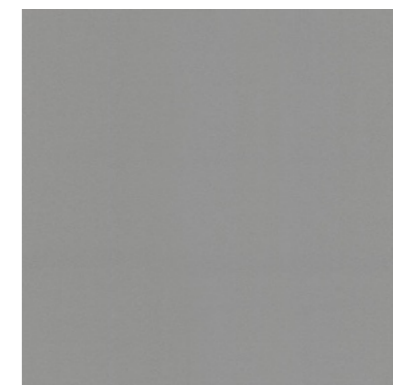


Size: 2 x 20m  
Coverage: 40m<sup>2</sup>

# Abstract

Silentflor 19dB abstract designs provide an alternative to traditional wood or concrete effects. Instead, options such as infinity, terrazzo and cosmos offer sleek and refined beauty through their smooth, continuous surface that creates a clean and modern look. These designs enhance the sense of space and flow within interiors, contributing to a minimalist and uncluttered aesthetic.

Cosmos ↓



9973 Storm

w/r 9845

Infinity ↓



9985 Honey Beige

w/r 9869

Terrazzo ↓



8962 Oyster

w/r 9693



9975 Moleskin

w/r 9841



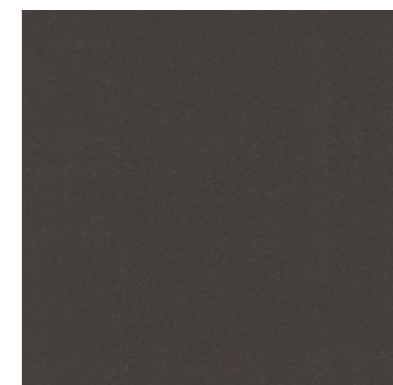
9986 Autumn Rain

w/r 9864



8961 Pebble

w/r 9691



9974 Jet

w/r 9842



Silentflor 19dB not only reduces noise, but also provides enhanced comfort underfoot, thanks to its soft, cushion backed, resilient construction. In commercial environments, comfort underfoot can lead to increased productivity and satisfaction, especially in sectors such as offices and retail where employees spend long hours standing or walking.

# Increased Comfort

Abstract





# Case Study

## Project : Klook Travel Office, Hong Kong

“The thickness of the Silentflor flooring products made it very easy for installation in this property. We were conscious that we should reduce noise from walking as much as possible, and we felt the product had sufficient acoustic absorption to meet that need.

We were particularly pleased to be able to select from the wide range of material textures and colours available from Polyflor to match the aesthetic and comfort required of this workplace design.”

Kenny Kinugasa-Tsui, architect

Location: Hong Kong

Products Used: Silentflor, Forest fx

Sector: Workplace



Scan to find out more



# Case Study

## Project : University of Mpumalanga, South Africa

Location: South Africa

Products Used: Silentflor

Sector: Education

“As well as the specific properties of the flooring, it was also important to ensure the product demonstrated true value and return on cost when compared to its competitors, as we were appointed to spend public money. Silentflor was a clear choice because of this and we’re confident it’s delivered on the brief.”

Ludwig Hansen, Founder of Ludwig Hansen Architects



Scan to find out more



As a leading global manufacturer of high-quality, high-performance sustainable floor coverings, Polyflor has demonstrated a significant level of commitment to minimising environmental impact. This meets the company's values, but also complies with ongoing objectives for ISO 14001 Environmental Management System and BES 6001 Responsible Sourcing accreditation.

Silentflor is 100% recyclable, whilst also containing up to 10% recycled material. It contains 52% natural material, is phthalate free and REACH compliant. Silentflor is extremely durable with its 0.7mm protective wear layer and PUR finish, and promotes a 10 year commercial guarantee. Easily cleaned with fewer chemicals, less water, and less energy, it is also non-shedding and does not harbour dust – important for clean air quality.

Furthermore, Silentflor achieves Indoor Air Comfort Gold and FloorScore certification for exceptionally low VOC emissions, providing indoor air quality and comfort. In support of sustainable construction, particularly with regards to LEED, WELL, SKA and Green Star projects, Polyflor has a Product Specific EPD (Environmental Product Declaration) and BRE LCA to assist.

For more information on our sustainability credentials, go to [www.polyflor.com](http://www.polyflor.com)

## ORDER SAMPLES

Polyflor provides a complementary product sample service so you can sample your choice of flooring before you make your final selection, and ensure you find the exact floorcovering you are looking for. To order your free sample of any Silentflor colour, visit the Polyflor website, call the dedicated Polyflor Samples Hotline on **+44 (0) 161 767 2551** or speak with your local Polyflor provider.

## CONTACT US

For general information on your specific project, either speak with your local Polyflor provider or contact us directly. If you require additional detailed technical data, either visit [polyflor.com](http://polyflor.com) and follow the links to the technical pages, contact Polyflor Customer Technical Services on **+44 (0) 161 767 1912** or email [tech@polyflor.com](mailto:tech@polyflor.com).

## MAINTENANCE

The incorporation of a polyurethane reinforcement (PUR) into the Silentflor collection helps to protect the floor covering by resisting soiling and scuffing. Combined with the superior closed surface finish, this enhanced protection allows the use of a polish-free maintenance regime for the lifetime of the flooring.



UK manufactured



**100% RECYCLABLE**  
CONTAINS RECYCLED MATERIAL



Product Format	Standard	Result
Gauge	ISO 24346 (EN 428)	3.7mm
Wear Layer	ISO 24340 (EN 429)	0.7mm
Total Weight	ISO 23997 (EN 430)	2550g/m <sup>2</sup>
Finish		PUR

Sheet Size	Size & Coverage per Roll	Shades
Sheet	2m x 20m = 40m <sup>2</sup>	34

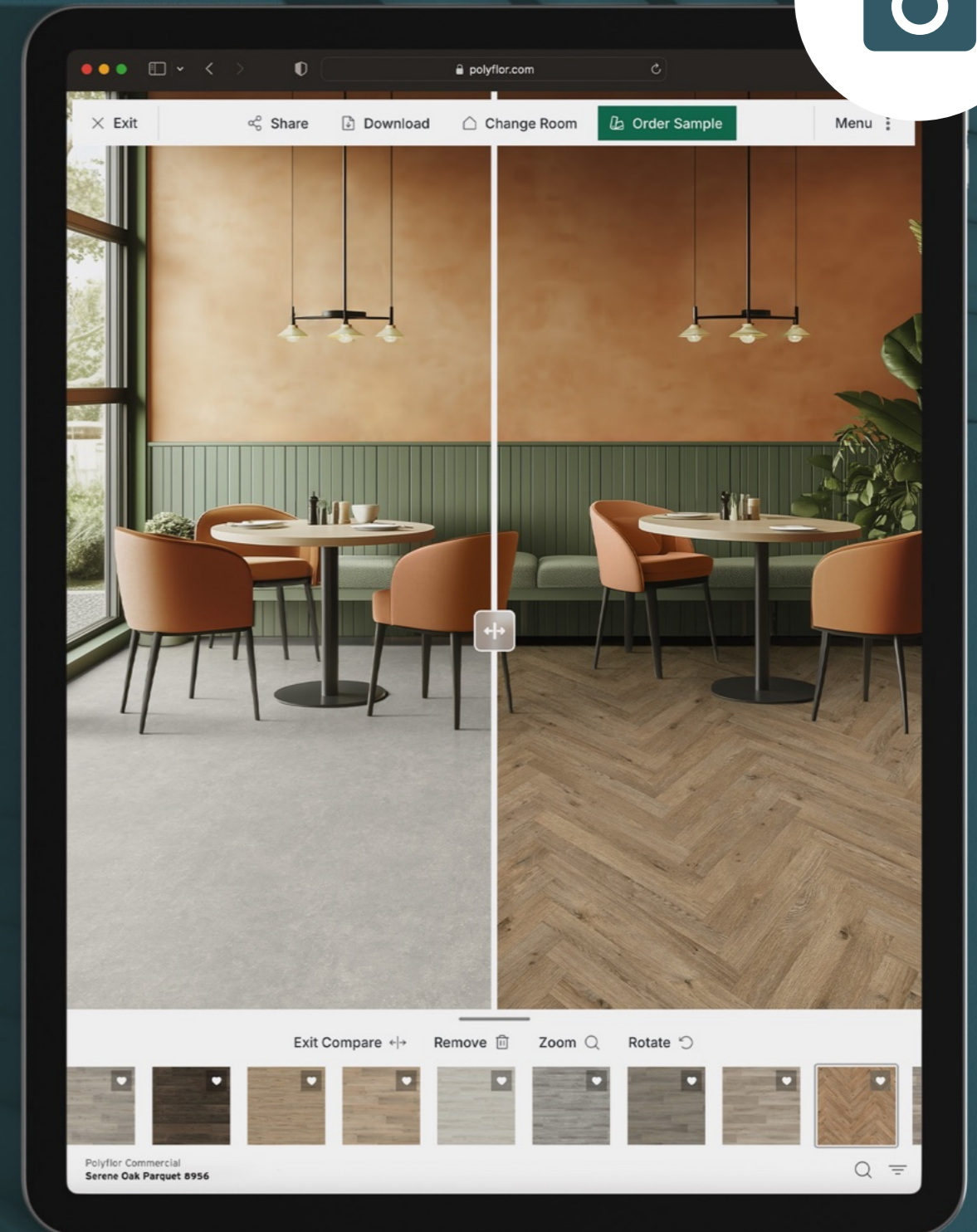
Performance Requirements	Standard	Result
General Performance	ISO 11638 (EN 651) ASTM F1303	Conforms Type I, Grade I, Class C Backing
Use Area	ISO 10874 (EN 685)	23, 34, 42
Slip Resistance	EN 13893	Class DS
	DIN 51130 / DIN EN 16165 Ann. B	R10
	AS 4586 ASTM D2047	R10 SCOF ≥0.5
Binder Content	ISO 10582	Type I
Abrasion Resistance	EN 651	Group T
Reaction to Fire	EN 13501-1	Class Bfl-S1
	ASTM E648	Class 1
	CAN/ULC S-102.2	FSV < 300; SDV < 500
Static Electrical Propensity	EN 1815	≤2.0kV Classified as 'antistatic'
Residual Indentation	ASTM F1914	≤0.005"
	ASTM F970 (Modified)	≤0.009" (750psi)
	ISO 24343-1	≤0.20mm
Castor Chair (continuous use)	ISO 4918 (EN 425)	Suitable
Dimensional Stability	ISO 23999 (EN 434)	≤0.40%
Flexibility	ISO 24344 (EN 435)	(Method A) Pass 20mm ø
	ASTM F137	0.25" Pass
Thermal Resistance	ISO 12667	0.0525m <sup>2</sup> K/W
Underfloor Heating		Suitable, max 27°C
Light Fastness	ISO 105-B02 (Method 3)	≥6
Furniture Leg	ISO 16581 (EN 424)	Pass
Resistance to Light	ASTM F1515	ΔE ≤ 8.0 - Meets
Resistance to Heat	ASTM F1514	ΔE ≤ 8.0 - Meets

Sustainability	Standard	Result
GreenTag	LCA Rate Gold Plus	GreenRate level A
Specific EN 15804 EPD		Available
Recyclable		100%
Recycled Content		10%
REACH		Compliant
Indoor Air Comfort Gold		Eurofins certified product
FloorScore		Certified
Finnish M1 Classification		Certified
AgBB/ABG		Pass
Responsible Sourcing	BES 6001	Excellent

Acoustic Performance	Standard	Result
Impact Sound Reduction	ISO 10140-3	19dB
Sound Transmission Coefficient	ASTM E90/E492	STC 57
Impact Insulation Class	ASTM E90/E492	IIC 56

Maintenance Performance	Standard	Result
Resistance to Chemicals	ISO 26987 (EN 423)	Good resistance
	ASTM F925	Good resistance

All Polyflor commercial sheet vinyl ranges provide a continuous, impervious and hygienic flooring solution which can be confidently cleaned in accordance with recommended maintenance procedures and approved maintenance products. The implementation of an effective cleaning regime is the most important defence against infection.



Explore and compare design options with our online visualiser

# PICTURE IT INSTANTLY

visit [www.polyflor.com/visualiser](http://www.polyflor.com/visualiser)



# Silentflor

## POLYFLOR™ INTERNATIONAL

### Australia

Polyflor Australia  
Tel: 1800 777 425  
Email: sales@polyflor.com.au

### Canada

Polyflor Canada Inc.  
Tel: +1 905 364 3000  
Email: sales@polyflor.ca

### China

Polyflor North Asia Ltd  
Tel: +(852) 2865 0101  
Email: info@polyflor.com.hk

### Colombia

Polyflor Ltd. (LATAM Office)  
Tel: +57 3142859005  
Email: export@polyflor.com

### France

James Halstead France SAS  
Tel: +33 (0)8 20 20 32 11  
Email: info@jhfrance.fr

### Germany

objectflor Art und Design Belags GmbH  
Tel: +49 (0) 2236 966 330  
Email: info@objectflor.de

### Ireland

Polyflor Ireland  
Tel: +353 (1) 864 9304  
Email: salesireland@polyflor.com

### Malaysia

Polyflor Martex  
Tel: 1300 80 7788  
Email: sales@polyflor.com.my

### Middle East

Polyflor Ltd.  
Tel: +971 50 406 8114  
Email: export@polyflor.com

### New Zealand

Polyflor New Zealand Ltd.  
Tel: 0800 765 935  
Tel: +64 9 269 1111  
Email: sales@polyflor.co.nz

### Norway

Polyflor Nordic  
Tel: +47 23 00 84 00  
Email: firmapost@polyflor.no

### Spain

Polyflor Ltd.  
Tel: +34 619 949 054  
Email: export@polyflor.com

### Sweden

Polyflor Nordic Sweden AB  
Tel: +46 (0) 300 15820  
Email: info@polyflor.se



## POLYFLOR™ UK

Polyflor Ltd. PO Box 3, Radcliffe New Road,  
Whitefield, Manchester, M45 7NR

Tel: +44 (0) 161 767 1111  
E-mail: info@polyflor.com

[www.polyflor.com](http://www.polyflor.com)

LIT478 09/25

*James Halstead*<sup>™</sup>  
FLOORING